A concrete weir structure with water cascading over it, surrounded by lush green vegetation. The water is white and foamy as it falls, creating a small waterfall effect. The surrounding area is filled with dense green trees and bushes, suggesting a natural or semi-natural setting. The overall scene is bright and vibrant, with a focus on the water and the surrounding greenery.

# SPRING SYSTEMS HYDROLOGIC UPDATE

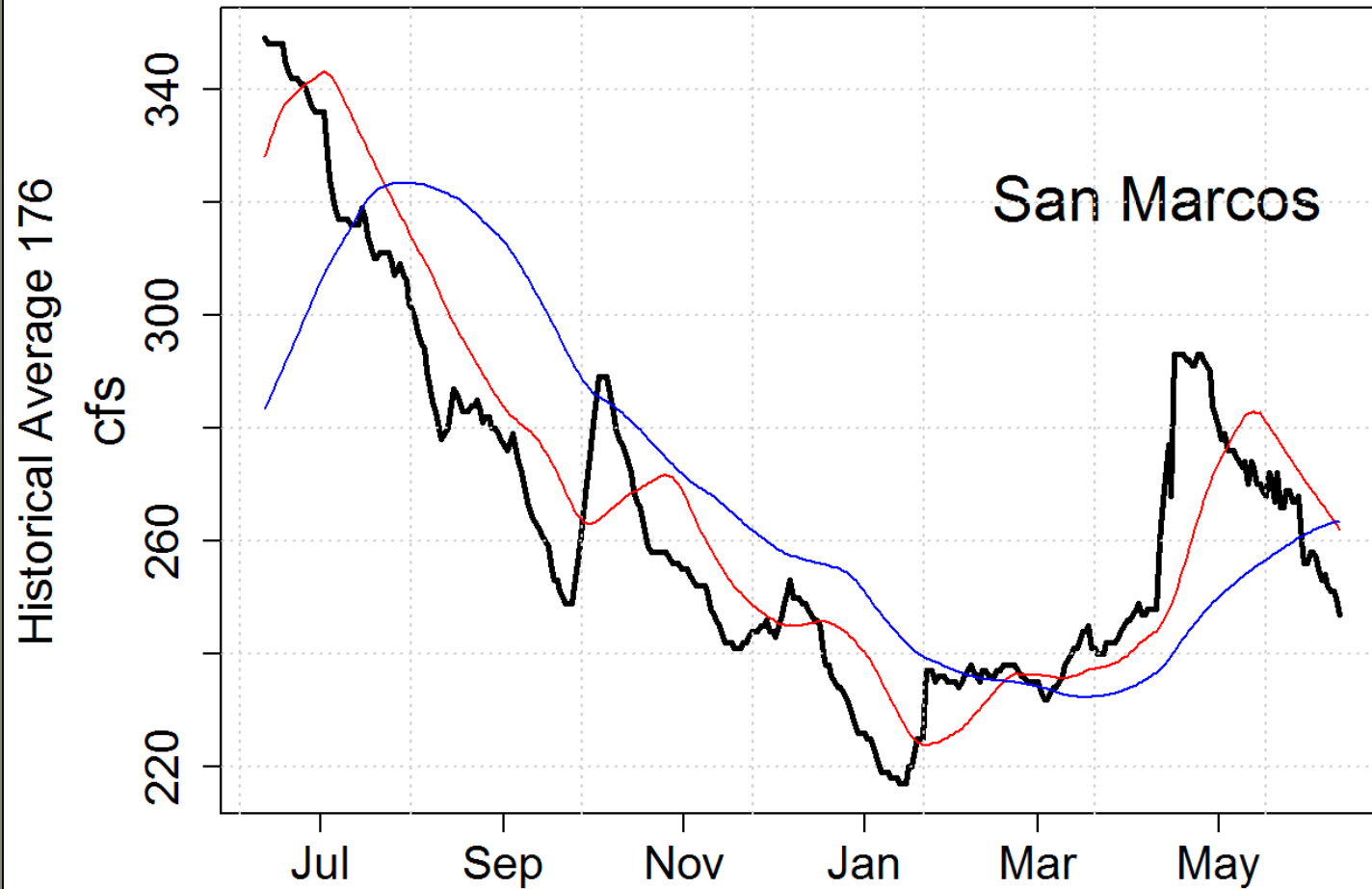


# HYDROLOGIC UPDATE

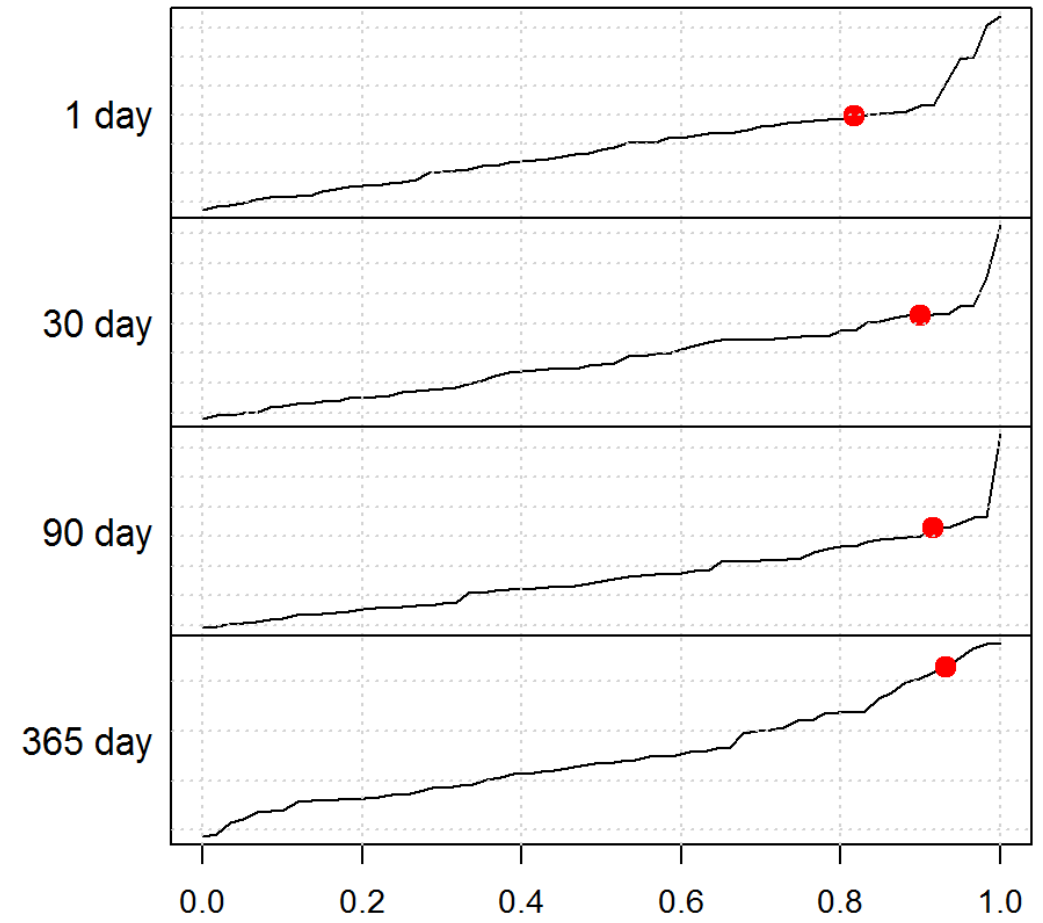


# SPRING FLOWS

June 11, 2017



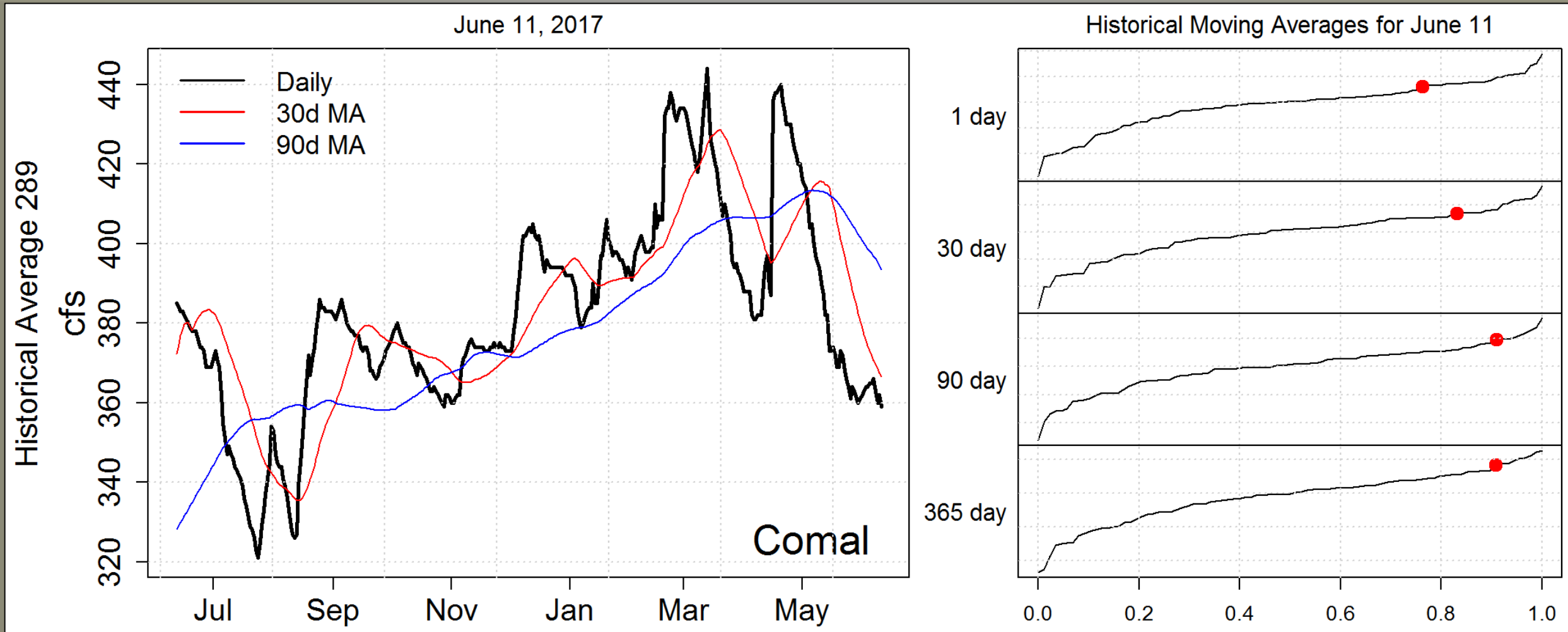
Historical Moving Averages for June 11, 2017



# HYDROLOGIC UPDATE



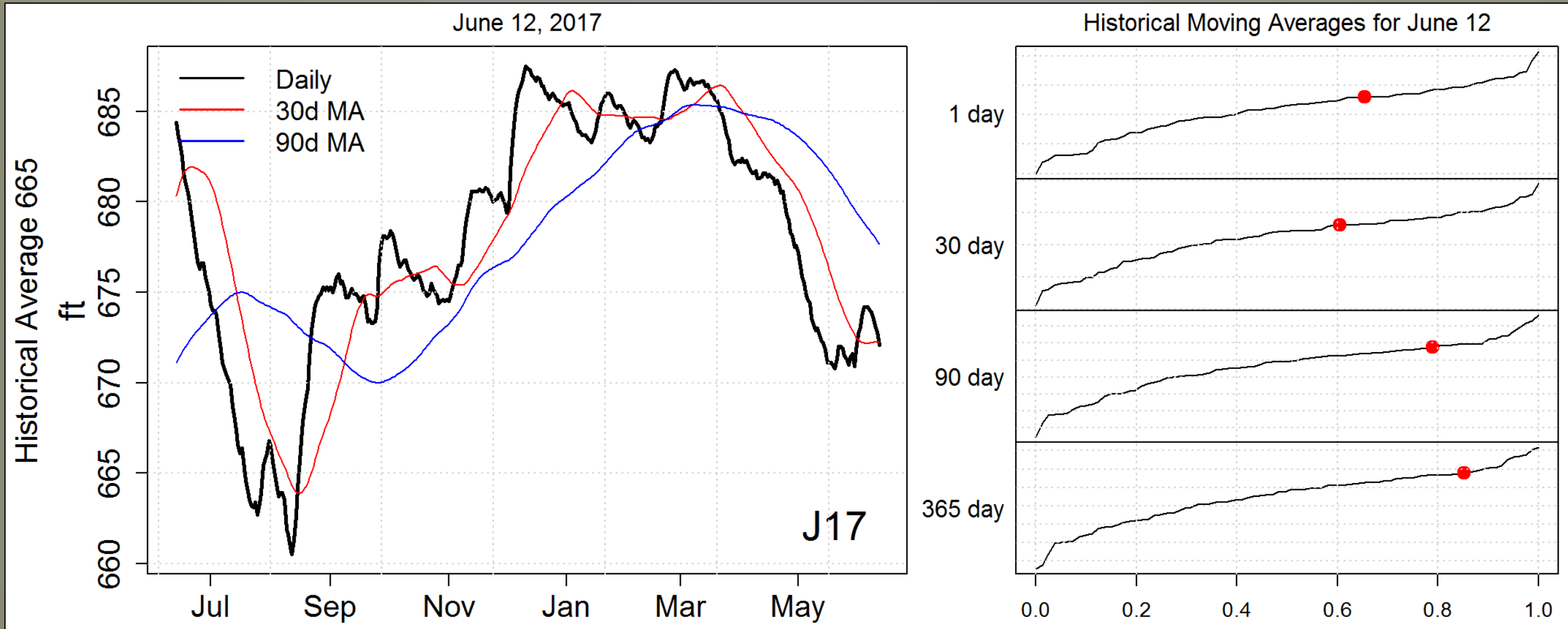
# SPRING FLOWS



# HYDROLOGIC UPDATE



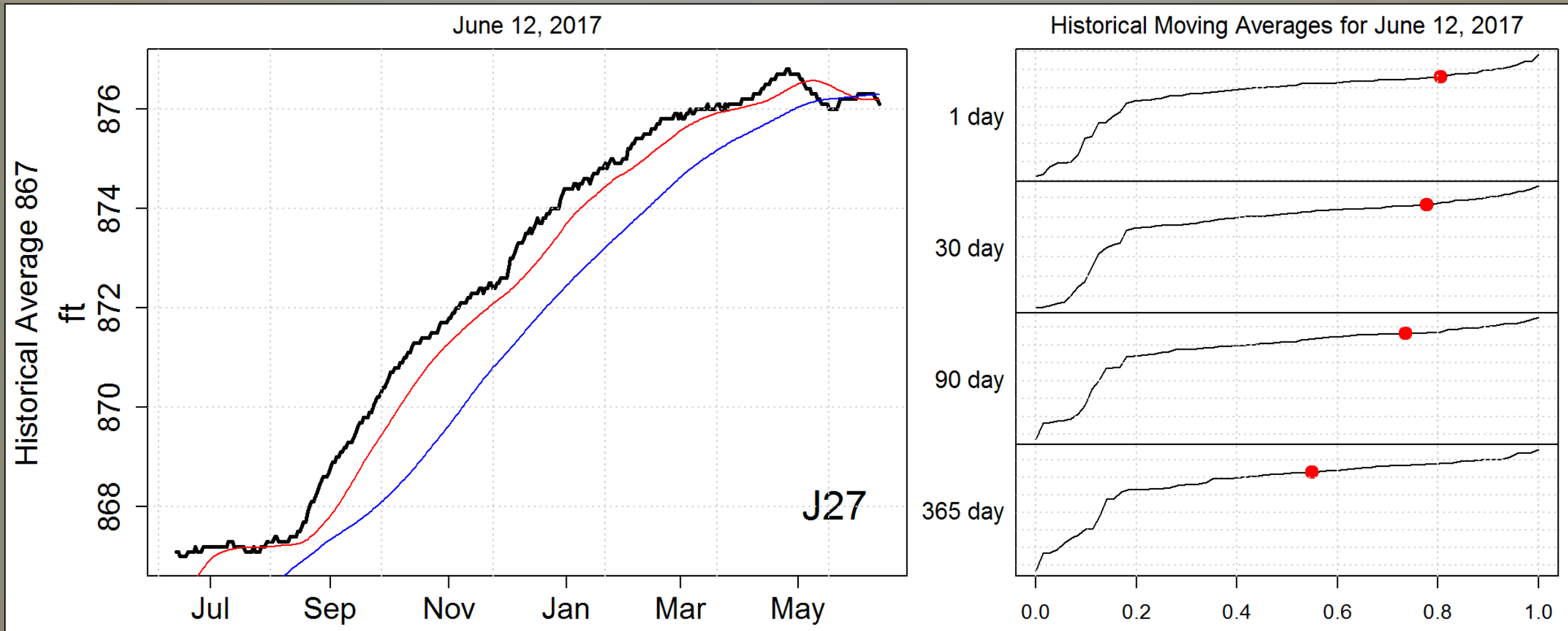
# INDEX WELLS



# HYDROLOGIC UPDATE

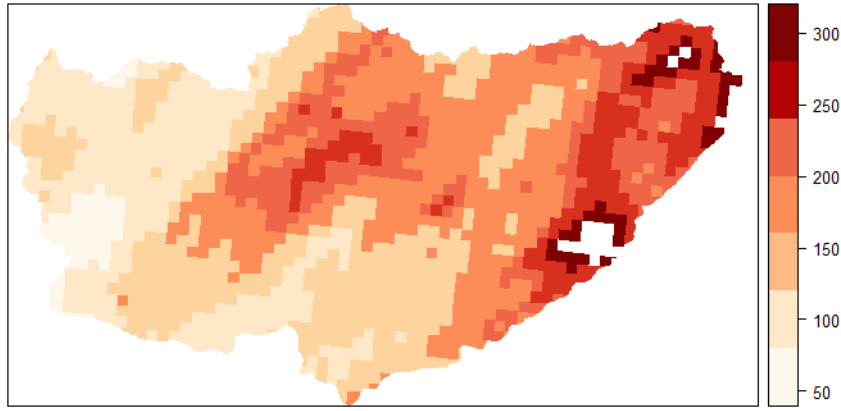


# INDEX WELLS

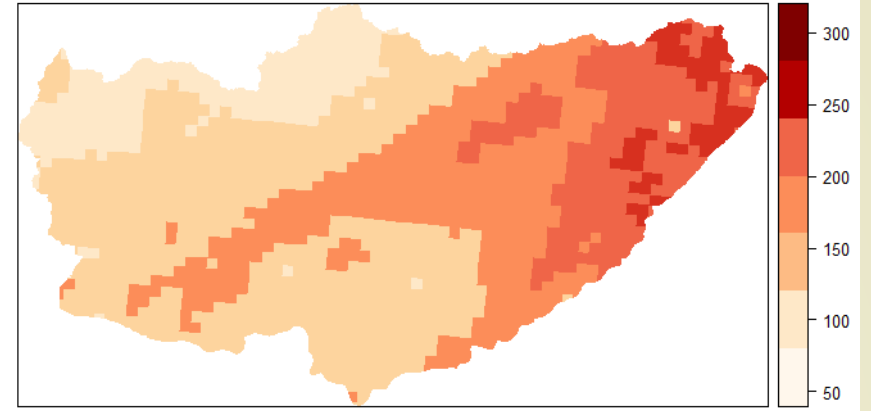


# Radar Precipitation Estimates

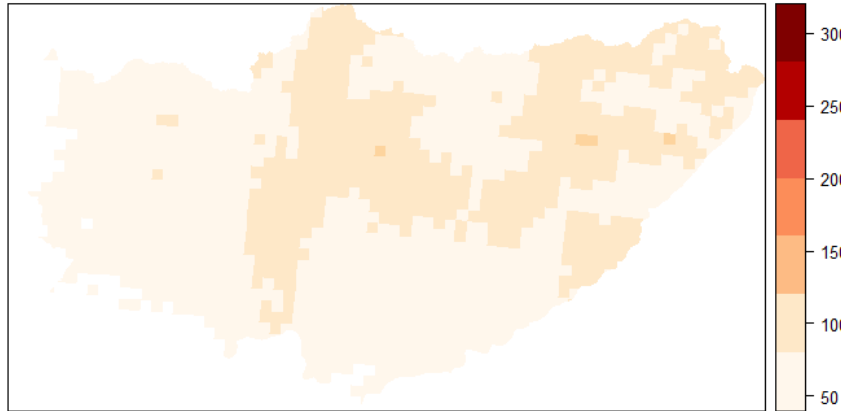
Jan - Mar 2012 168 mm



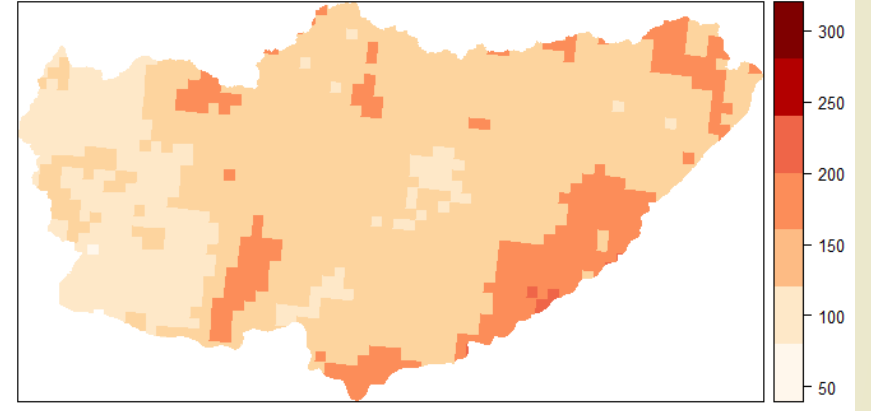
Jan - Mar 2015 163 mm



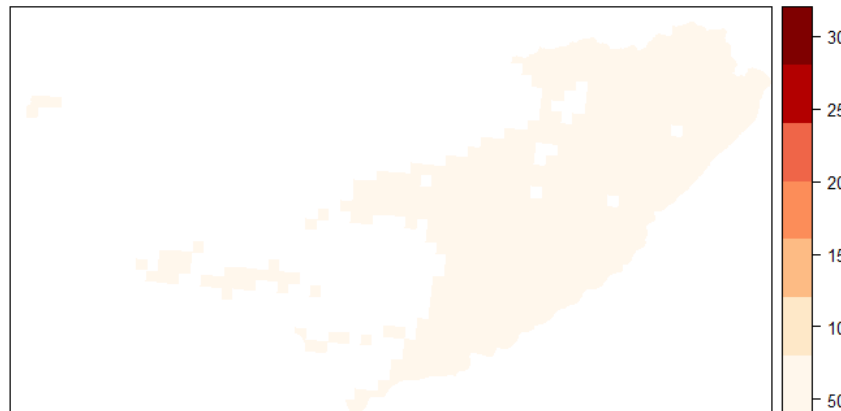
Jan - Mar 2013 69 mm



Jan - Mar 2016 137 mm



Jan - Mar 2014 39 mm



Jan - Mar 2017 162 mm

